

## **ITEM NO. 1: The particulars of the Organization, Function and Duties**

**T**he Central Sericultural Research & Training Institute, Berhampore is a premier R&D Institute established in the year 1943 to provide the research and development support for promotion of silk industry in the eastern region. Presently, it functions under the administrative control of Central Silk Board, a statutory body under the ministry of textiles, Govt. of India.

During 1943, realizing the importance of silk industry in providing employment and export opportunities, a policy decision was taken to encourage and support the production of silk. Therefore, in order to revive this ailing industry from the ravages of diseases, inferior quality and poor productivity, the Central Sericultural Research Station was established at Berhampore in the erstwhile Bengal in the same year. In 1969, the Research Station was merged with Central Silk Board. In 1971, as per the Board's decision for dissemination of research findings from Lab. to land, Training and Extension activities were started and the station was renamed as Central Sericultural Research & Training Institute in the year 1975-76. This has resulted qualitative and quantitative improvement in silk production in the eastern region.

### **LAND & BUILDING:**

The CSR&TI, Berhampore is having 63 acres of land, of which 30 acres are under plantation, 10 acres under pond, 1.5 acres under office building, Lab., rearing houses and student's hostel, 15 acres under residential areas and remaining 6.5 acres for road. A total of 104 Nos. residential staff quarters, 3 Nos. office building, 9 Nos. Rearing house, one Farm house, one student hostel (100 bed capacity), one work shop and one Guest house are available.

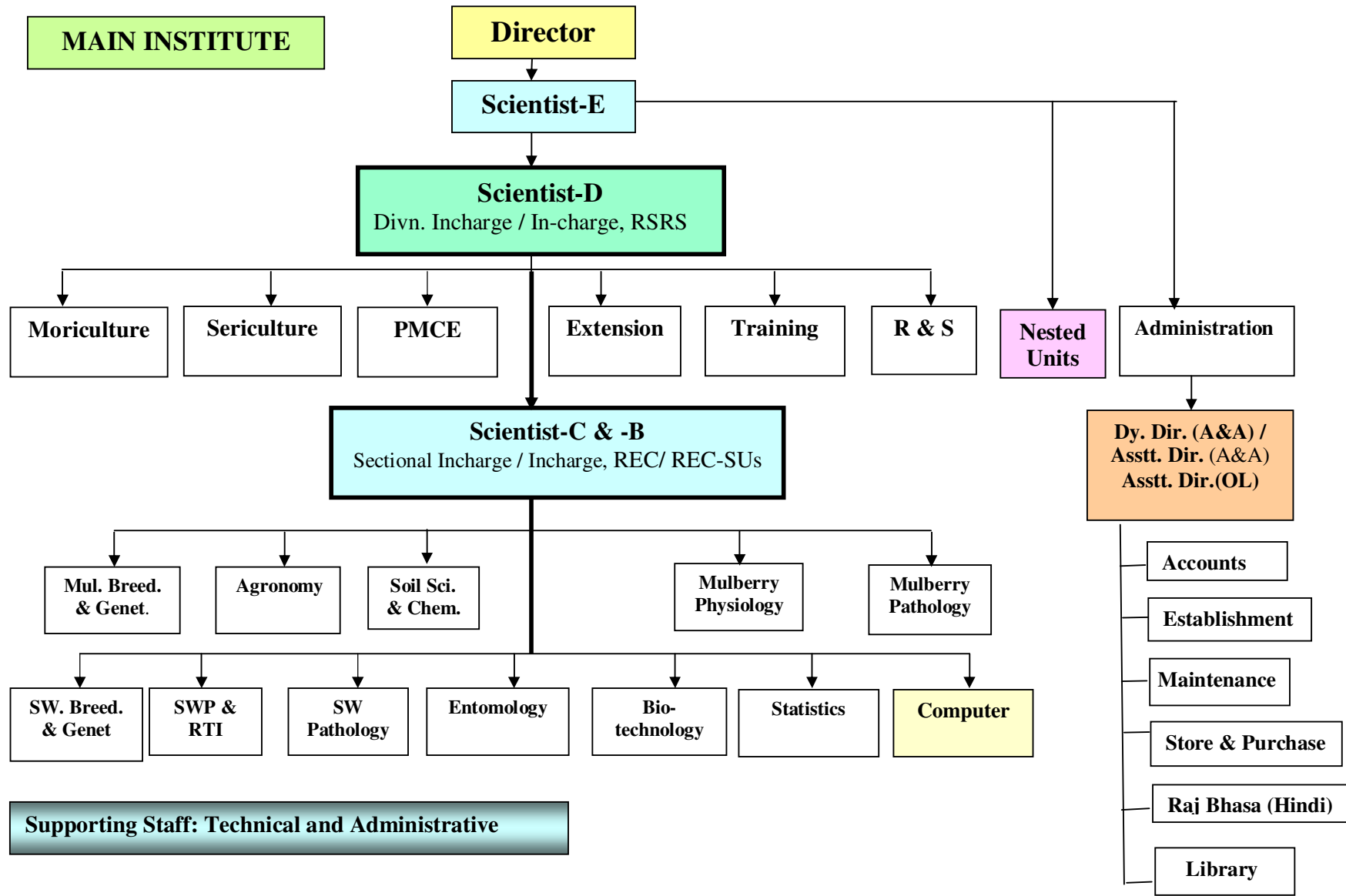
### **MANPOWER:**

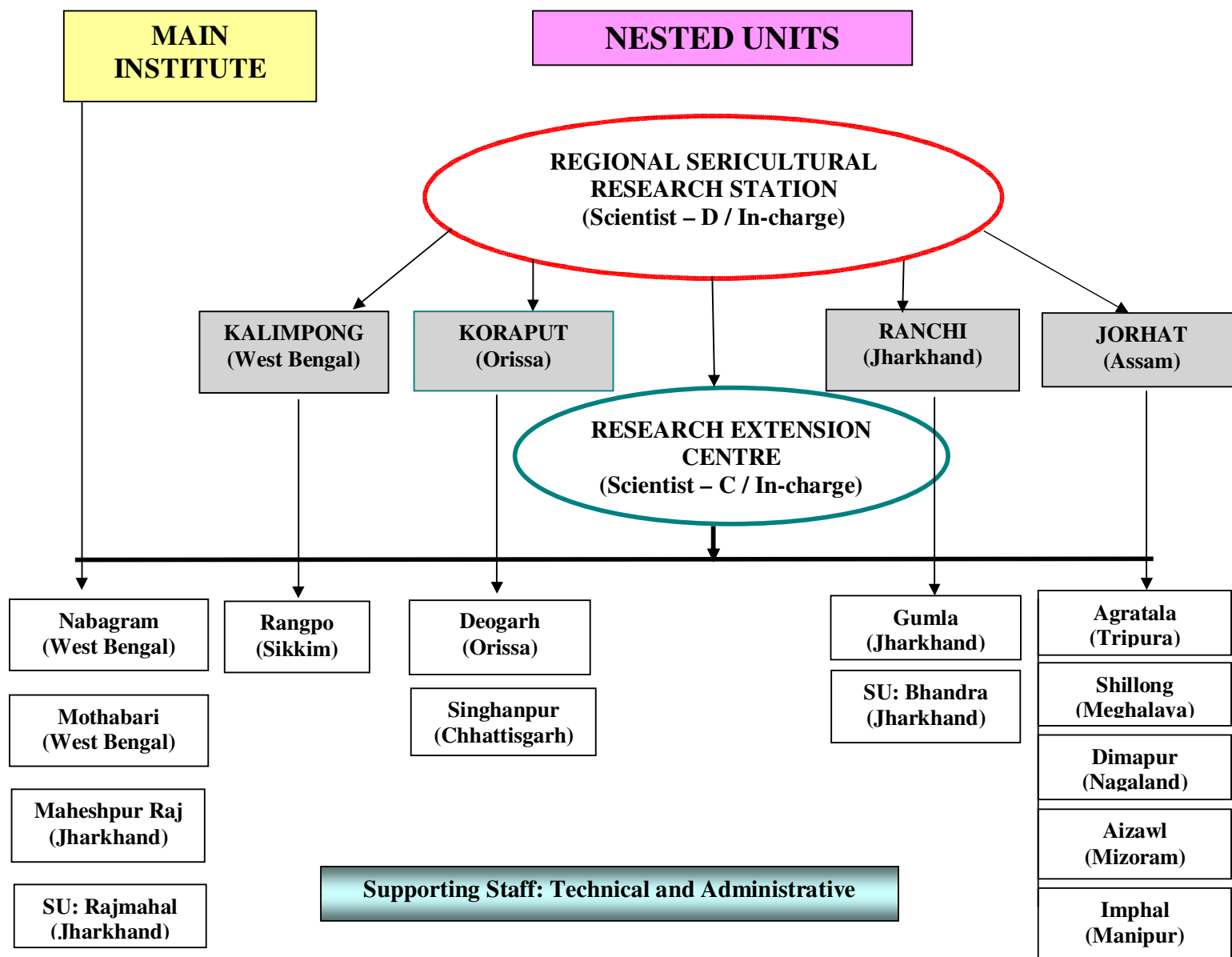
The Institute has a substantial manpower of 186 staff and workers comprising with Scientists including one Director, Technical, Administrative staff and TSFWs (85).

### **ORGANIZATIONAL SET UP:**

The Institute is envisaged its R&D activities and extension with six major divisions namely Moriculture, Sericulture, PMCE, Reeling & Spinning, Training and Extension comprising of 22 sections along with the Computer, Library and Administrative sections. The following organizational chart of the institution shows the details of different establishments.

# Hierarchical System / Organizational Set up of CSR&TI, Berhampore, W.B.





## FACILITIES FOR EMPLOYEES:

The Institute has an **Employees'** Co-operative Stores Berhampore, Murshidabad (Regd. No. 15 of 1969-70) registered with Govt. of West Bengal, which has been functioning successfully since 1969. A Recreation club managed by the employees has also been functioning since establishment of the Institute. A community Hall has been established with the active contribution of the staff members for various cultural functions.

## MANDATE:

The core areas of work of CSR&TI, Berhampore (WB) are as follows:-

1. To increase of productivity of silkworm (Multivoltine, MXBi and Bi x Bi) and mulberry for irrigated and rain fed conditions in its areas of operations.
2. It shall be the testing centre for all mulberry silkworms related experiments or feeding technologies evolved in CSB Institutions or referred by other agencies to CSB in the states identified for it.
3. Human resources development through training and academic initiatives.
4. Co-ordination with DOS for development of sericulture industry.

The institute conducts research on all fields of sericulture from soil to silk. Entrusted with the mandate to carry out research, it has made remarkable breakthrough and outstanding contributions for the overall development of silk industry in the region. In the plant side, improved mulberry varieties, suitable to the agro climatic condition of different areas, have been developed along with its package of practices by the way of integrated nutrient management (INM). Regarding silkworm, region and season specific high yielding silkworm breeds have been evolved. The institute has developed of diseases and pests of mulberry and silkworm, which are being popularised in the fields and proved to be effective to minimise crop losses. With regard to post cocoon technologies improved cooking and the Institute has developed reeling techniques.

The Institute has been conducting training on different aspects of sericulture since, 1975. The details of the courses conducted by the Institute are as follows:

- Post Graduate Diploma in Sericulture (PGDS) for 15 months
- Capsule course for 1 – 5 weeks and
- On-job training for 2 weeks

All together **5531** candidates were trained through imparting training under various courses since 1975 till date with the following break up (As on 31<sup>st</sup> December, 2011):

Name of the Programme	<i>No. of Trainees</i>
1. Post Graduate Diploma in Sericulture (PGDS)	869
2. Diploma in Mulberry Sericulture (DMS)	298
3. Capsule course	1932
4. Intensive Practical Training (IPT)	276
5. Vocational Course	1119
6. Junior Certificate Course	80
7. Crash Training for Bank Officers	37
8. Foundation course	77
9. Refresher' course	121
10. Demonstration of Evolved Techniques	27

11. Trainers Training Programme	63
12. MDP / SUP Programme (under Central Sector Scheme)	632
<b>TOTAL</b>	<b>5531</b>

## **EXTENSION NETWORK**

The Institute has an effective extension network for dissemination of the sericultural technologies to the farmers through different programmes like IVLP, TAR and other Technology Demonstration Programmes.

Besides, the Institute disseminates the sericultural technologies to the farmers through its nested units i.e. Regional Sericultural Research Stations (RSRSs), Research Extension Centres (RECs) and REC-Sub Units located in different states (West Bengal, Sikkim, Jharkhand, Bihar, Orissa Chhittigarh and Madhya Pradesh) for fine tuning of the technologies developed. RSRS is entrusted with the regional problems of sericulture and overall extension and development. It also conducts the adoptive research for the main institute for testing suitability in the region. Similarly, RECs and REC (SUs) are also entrusted with the responsibilities for popularizing new technologies through demonstration at farmers' level.

### **Location of the Nested Units:**

#### **About the nested units**

<b>RSRSs</b>	<b>RECs</b>	<b>REC-SUs</b>
Kalimpong	Nabagram	Bhandra
Ranchi	Mothabari	Rajmahal
Koraput	Rangpo	
Jorhat	Maheshpurraj	
	Gumla	
	Singhanpur	
	Deogarh	
	Imphal	
	Aizwal	
	Dimapur	
	Shillong	
	Agartala	

### **INTERNET AND INTRANET:**

The Institute has established a gigabit backbone Local Area Network (LAN), Internet and Intranet Web Pages for the better utilization and resources management and quick dissemination of information.

Website: [www.csrtiber.res.in](http://www.csrtiber.res.in)

Email: [csrtiber@csb.gov.in](mailto:csrtiber@csb.gov.in) / [csrtiber@gmail.com](mailto:csrtiber@gmail.com)